

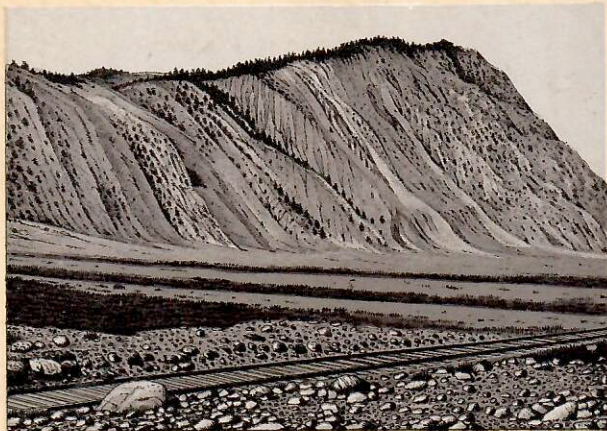
YELLOWSTONE
NATIONAL
PARK.

THE World's Wonderland.

W. C. Riley, Publisher, St. Paul, Minn.



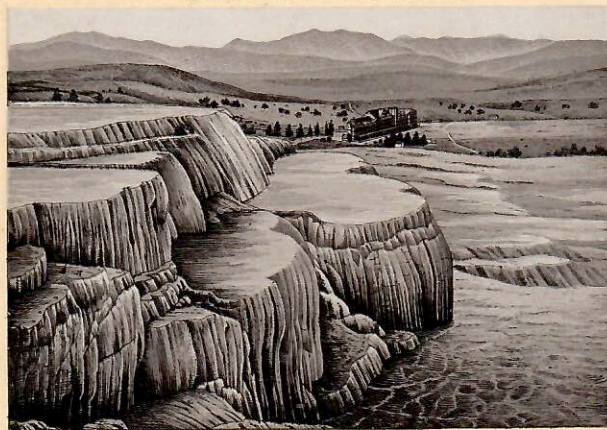
GARDNER RIVER ROAD ENTRANCE TO PARK.



DEVIL'S SLIDE GINNEBAR MOUNTAIN.



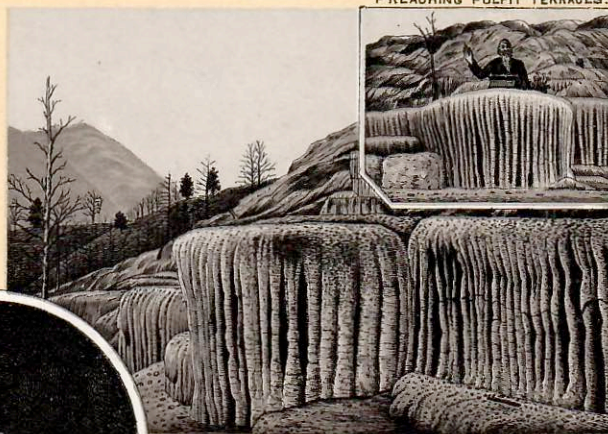
MAMMOTH HOT SPRINGS HOTEL 400 FEET LONG.
SIX HORSE COACH
STARTING FROM HOTEL.



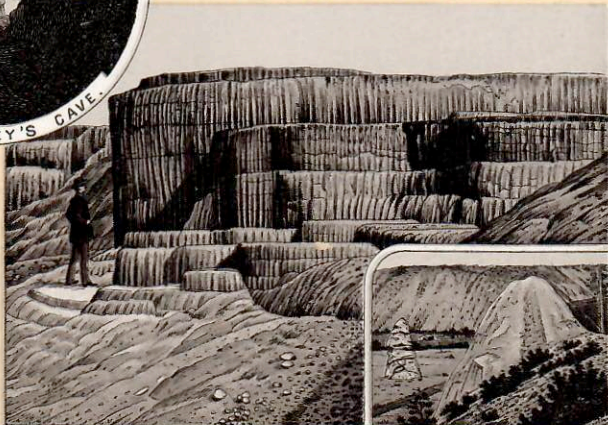
MINERVA TERRACES HOTEL IN DISTANCE.



LIBERTY CAP.



PULPIT TERRACES EASTWARD AND BUNSON'S PEAK.

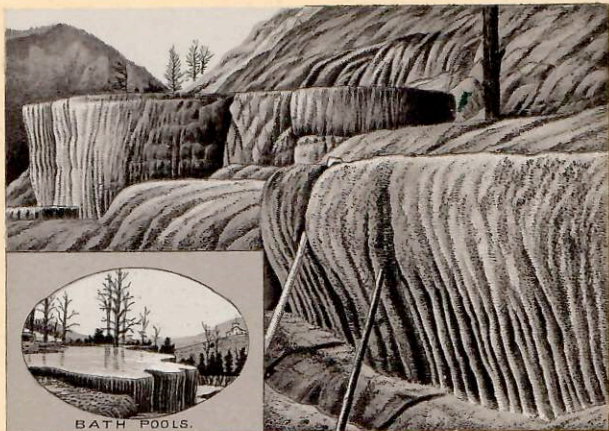


CLEOPATRA'S BOWL.

DEVIL'S THUMB.



UPPER PULPIT TERRACE SPRINGS.

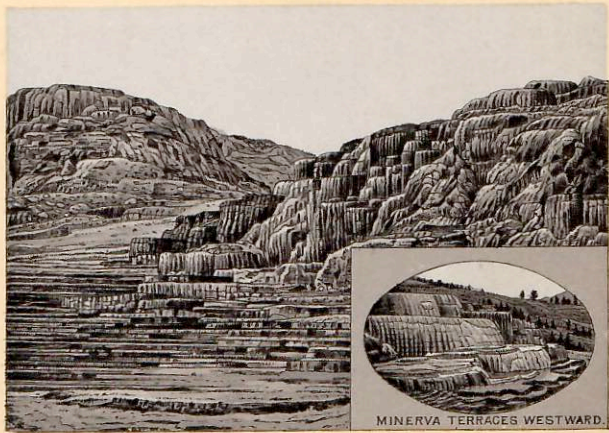


BATH POOLS.

PULPIT TERRACES.



LITTLE JUPITER TERRACES.



MINERVA TERRACES WESTWARD.

MINERVA AND JUPITER TERRACES.



MAMMOTH HOT SPRINGS EDGE OF FORMATION.



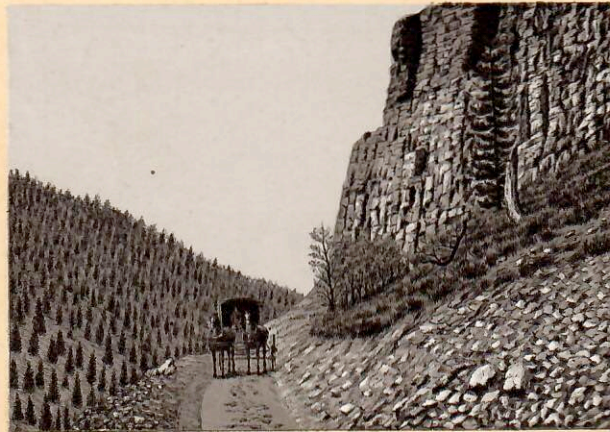
PULPIT TERRACE POOLS.



FALLS OF MIDDLE GARDNER RIVER 135 FEET HIGH.

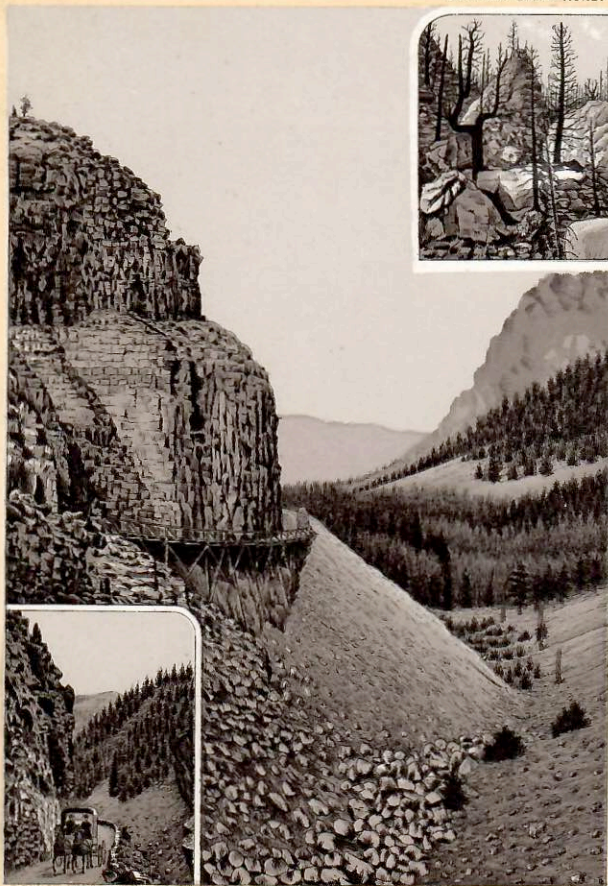


ELECTRIC PEAK.



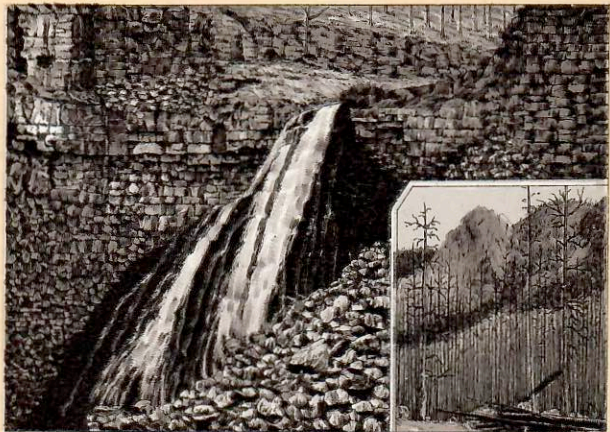
OBSIDIAN CLIFFS. (VOLCANIC GLASS.)

LIMESTONE HOODOOS
GOLDEN GATE ROAD.



GOLDEN GATE ROAD
GARDNER RIVER GANON.

GOLDEN GATE ROAD.
GARDNER RIVER & TRUSTLE EASTWARD.



FALLS OF WEST GARDNER RIVER.



CATHEDRAL ROCK
2000 FEET HIGH.

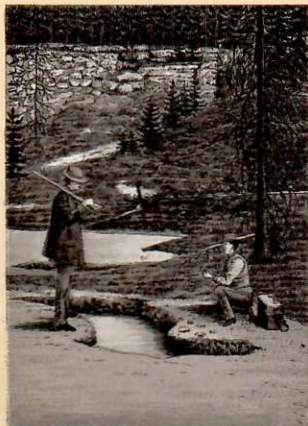


STEAM VENT-GIBBON RIVER ROAD.



MONARCH GEYSER ERUPTING.

NORRIS GEYSER. BASIN



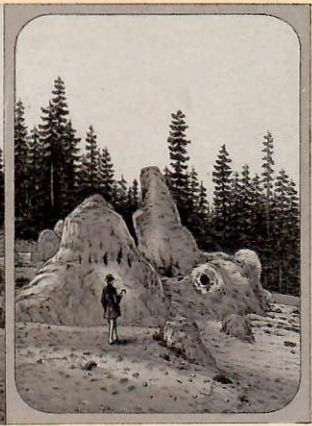
Paint Pots. Gibbon Meadow.



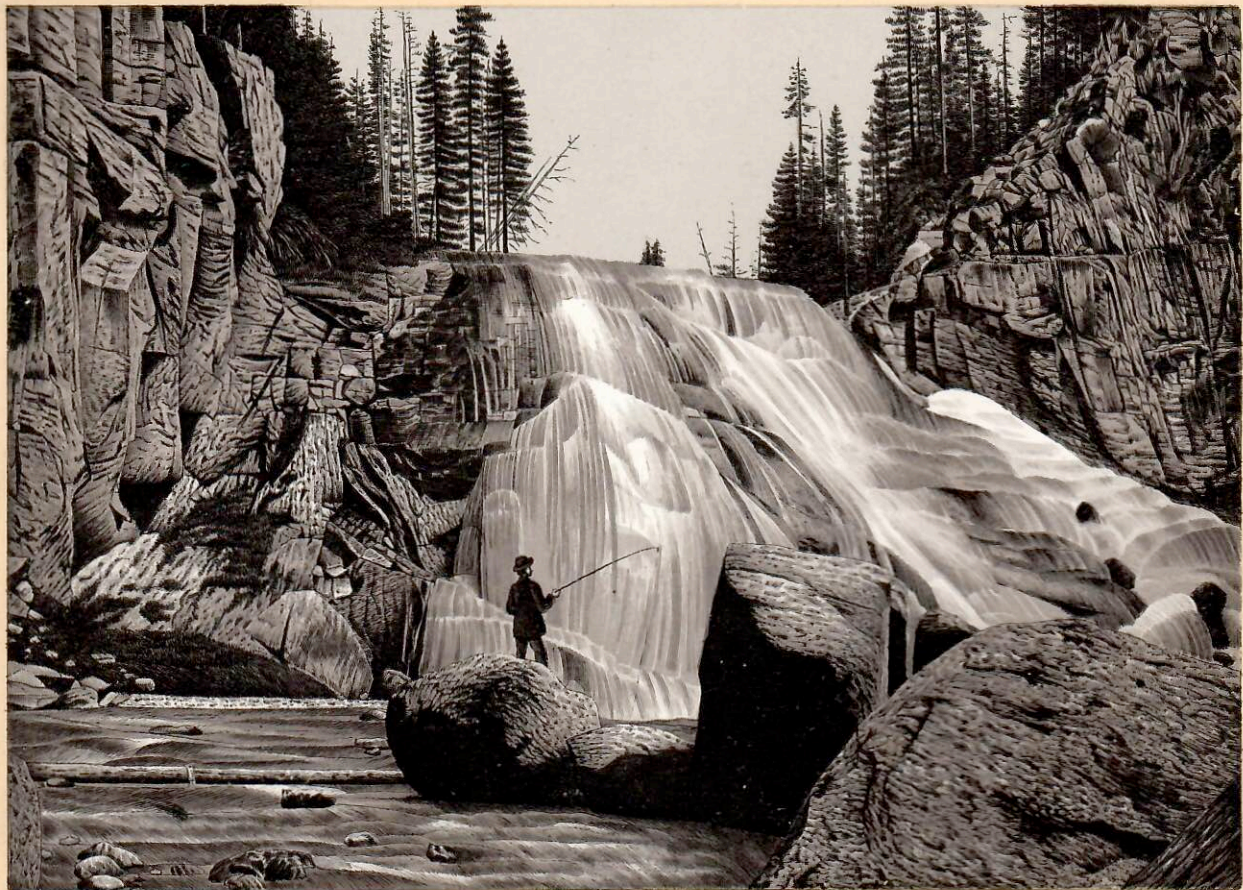
Monument Geyser Cones - Mt. Schurz.



Monument Geyser Cones - Mt. Schurz.



Monument Geyser Cones - Mt. Schurz.



GIBBON FALLS 80 FEET HIGH. MT. SCHURZ.



FOUNTAIN GEYSER.



GREAT FOUNTAIN OR MAMMOTH GEYSER.



MAMMOTH PAINT POTS FIRE HOLE BASIN.



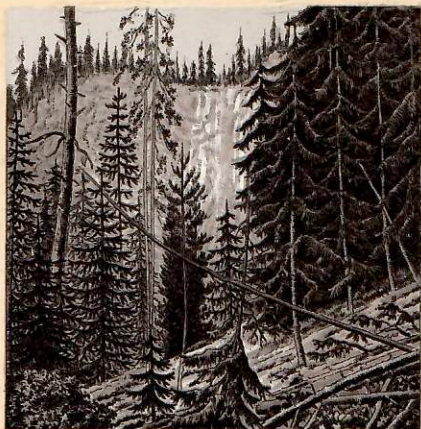
MAIDENS GRAVE SPRING. FIREHOLE RIVER.



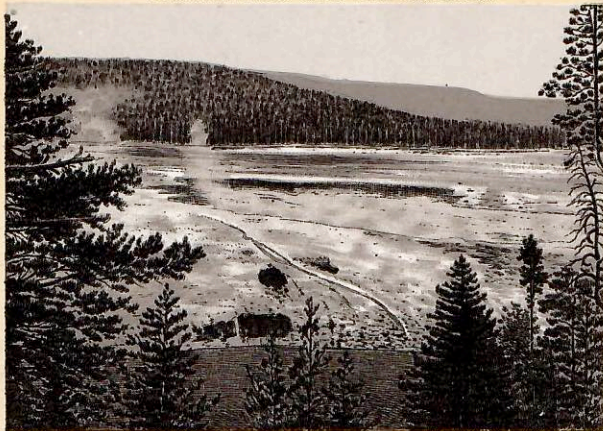
MUD PUFFS. FIREHOLE BASIN.



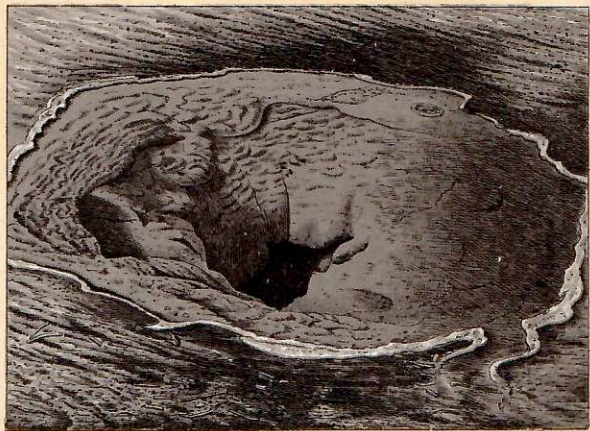
HELLS HALF ACRE. NEAR VIEW LOOKING IN.



FAIRY FALLS 280 FEET HIGH.



HELLS HALF ACRE. FROM HILLSIDE WESTWARD.



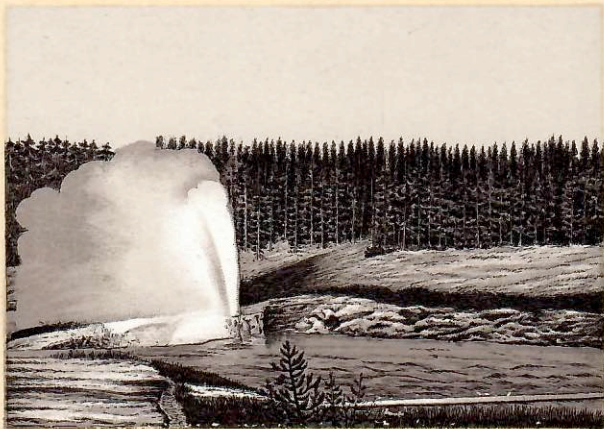
MORNING GLORY SPRING. (UPPER BASIN.)



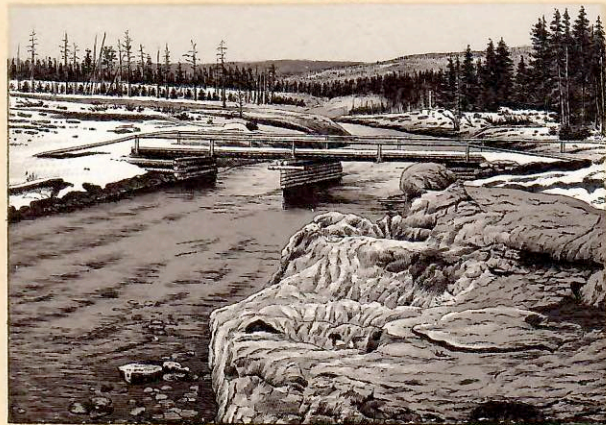
EXCELSIOR GEYSER, ERUPTING 400 FEET HIGH. DIAMETER OF CRATER ABOUT 50 X 150.



FAN GEYSER.



RIVERSIDE GEYSER.



RIVERSIDE GEYSER.
Cone & Bridge across Firehole River.



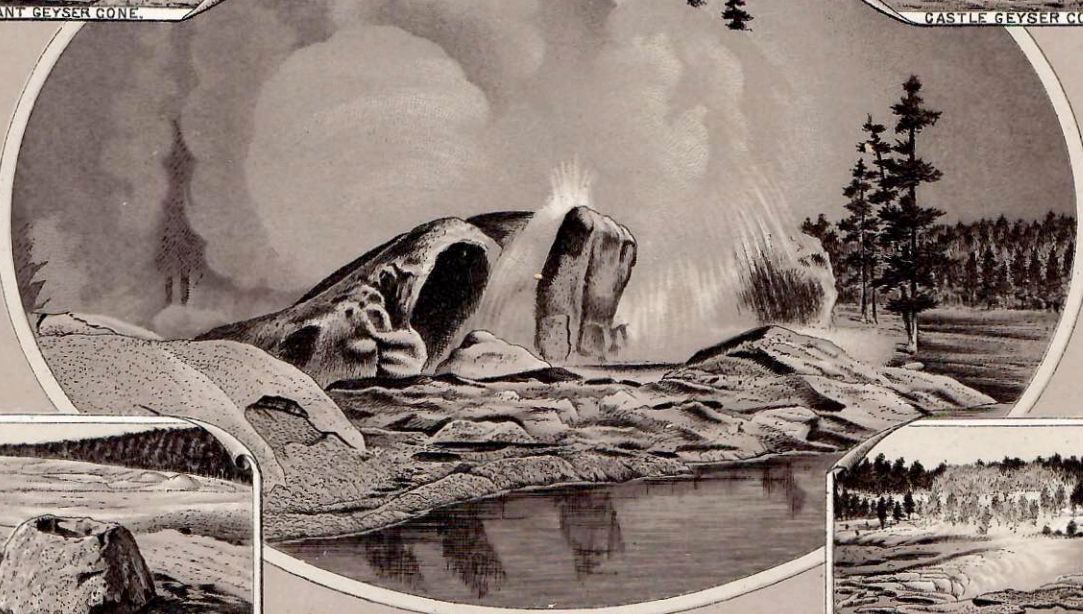
GRAND GEYSER AND INDICATOR.



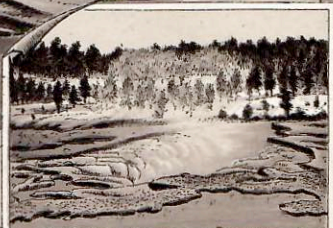
GIANT GEYSER CONE.



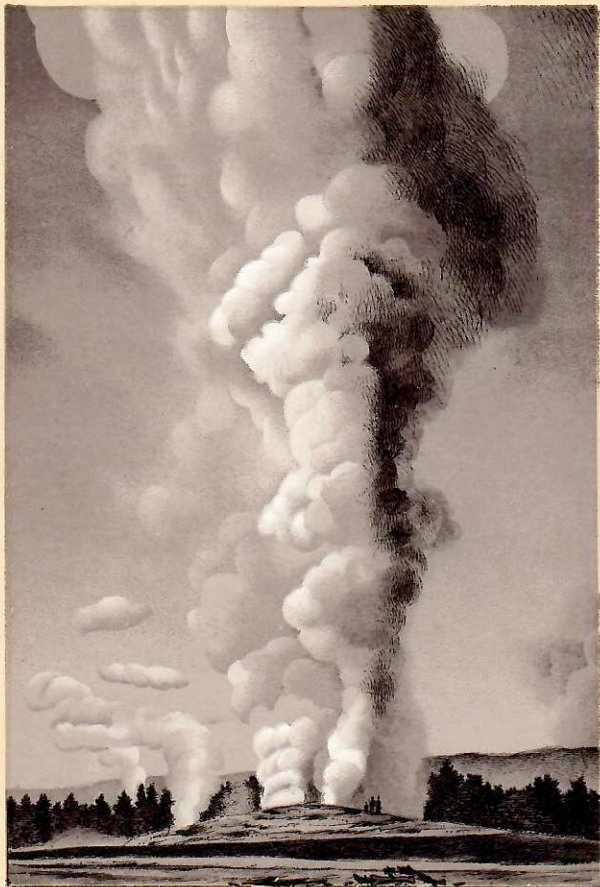
CASTLE GEYSER CONE.



BEEHIVE GEYSER CONE.



OBLONG GEYSER AND GRATER.



GIANT GEYSER.



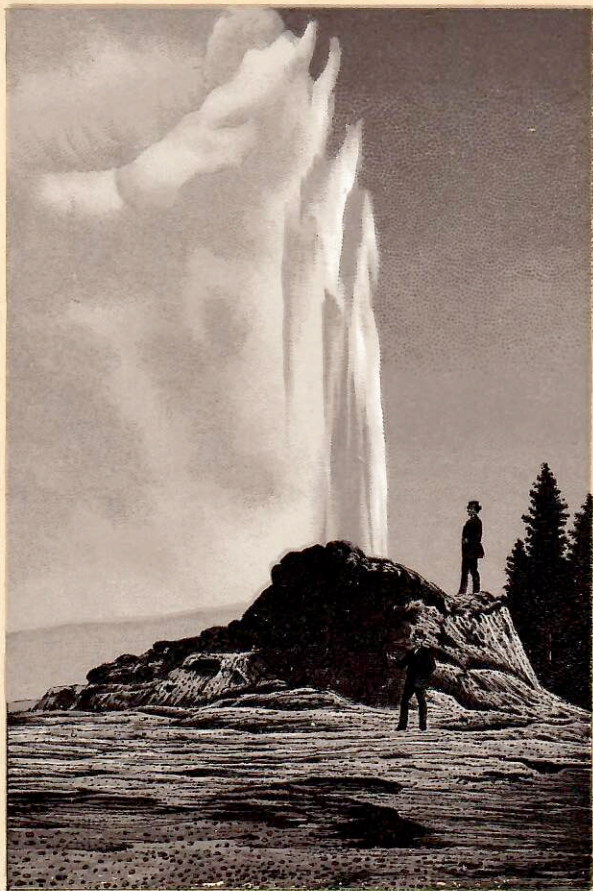
GIANTESS GEYSER.



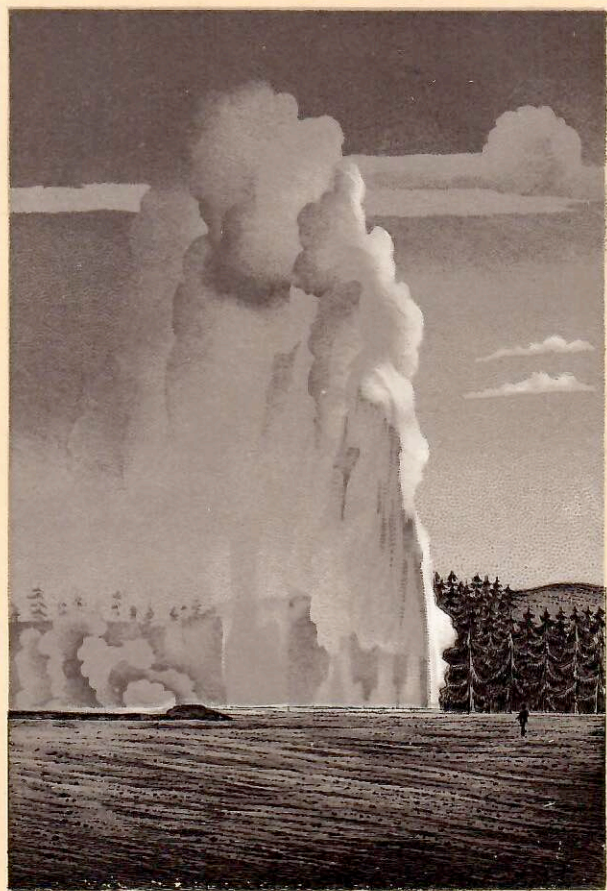
OLD FAITHFUL GEYSER.



BEE-HIVE GEYSER.



CASTLE GEYSER.



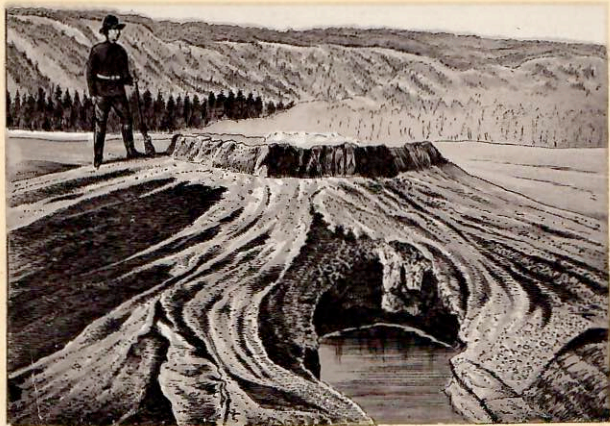
SPLENDID GEYSER. ERUPTING 150 FEET HIGH.



MONARCH GEYSER



SPONGE SPRING ERUPTING.



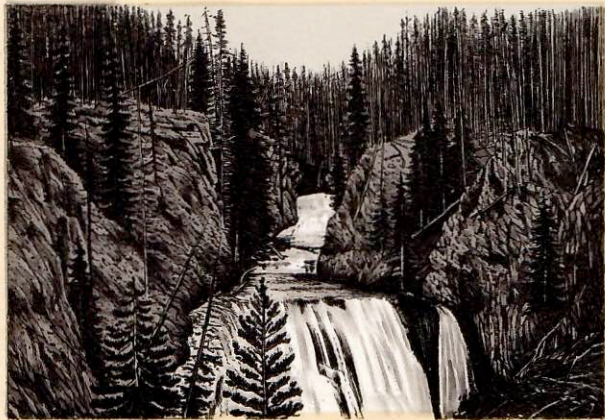
DEVILS PUNCH BOWL.



CASTLE GEYSER CONE-DIANA'S POOL IN FOREGROUND.



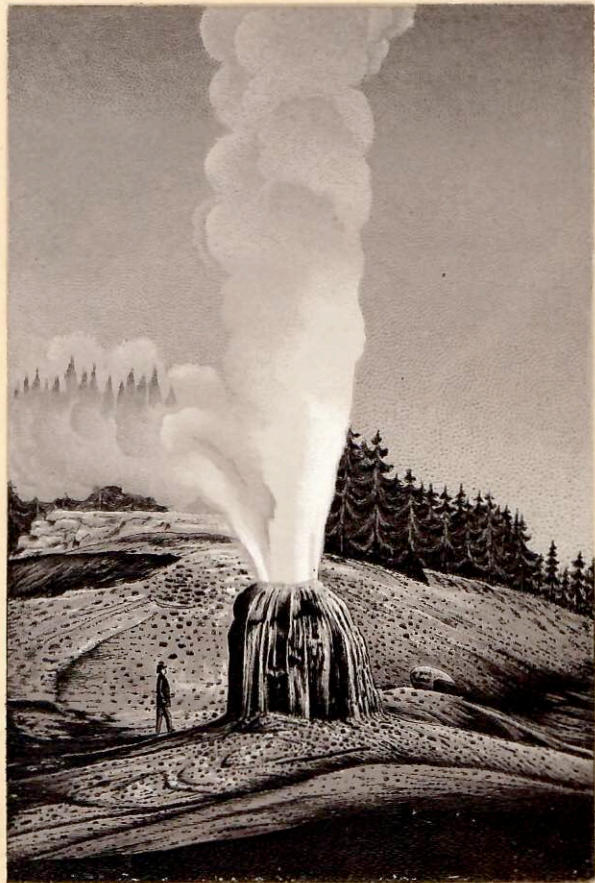
OLD FAITHFUL AT SUNRISE ERUPTING STEAM.



KEPPLERS CASCADES FROM ABOVE.



LONE STAR GEYSER CONE.



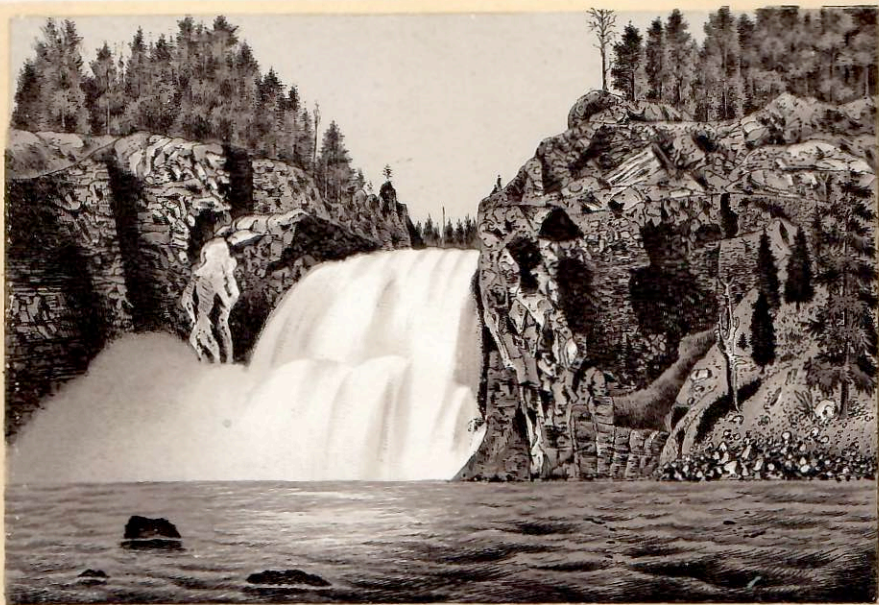
LONE STAR GEYSER.



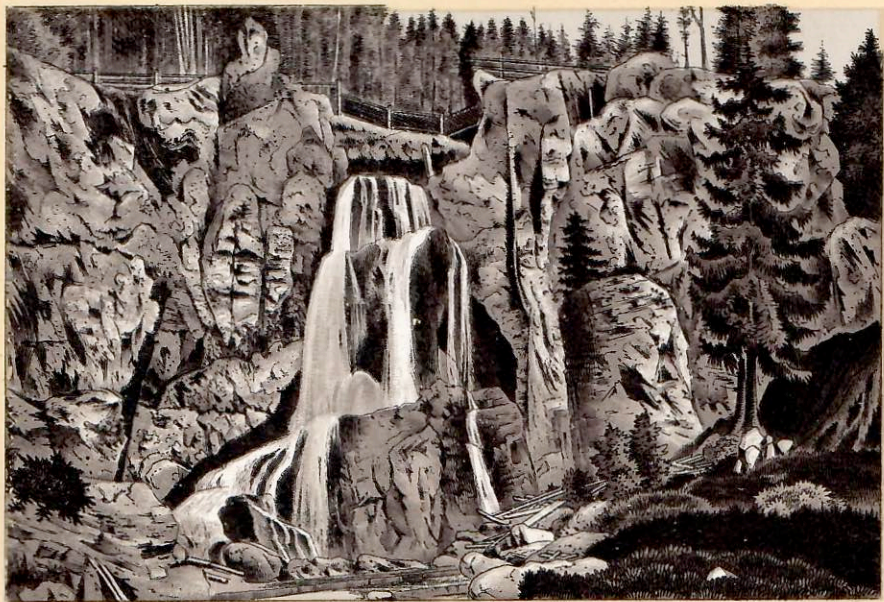
GRAND FALLS YELLOWSTONE RIVER.
Canon & Point Lookout.



CANON OF YELLOWSTONE RIVER.
Small Geyser in Canon.



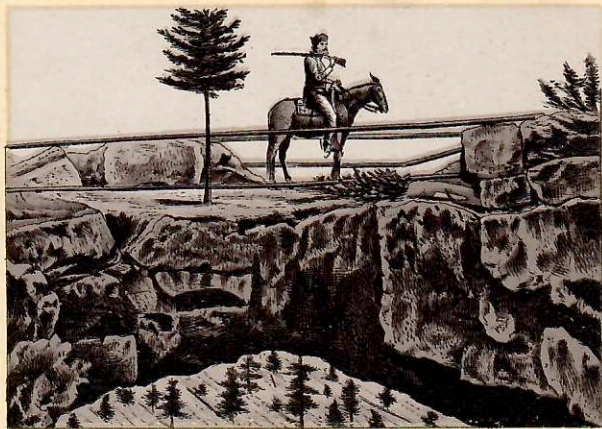
Upper Falls Yellowstone from Middle of River 156 feet high.



CRYSTAL CASCADES 150 FEET HIGH.



YELLOWSTONE RIVER ABOVE UPPER FALLS.



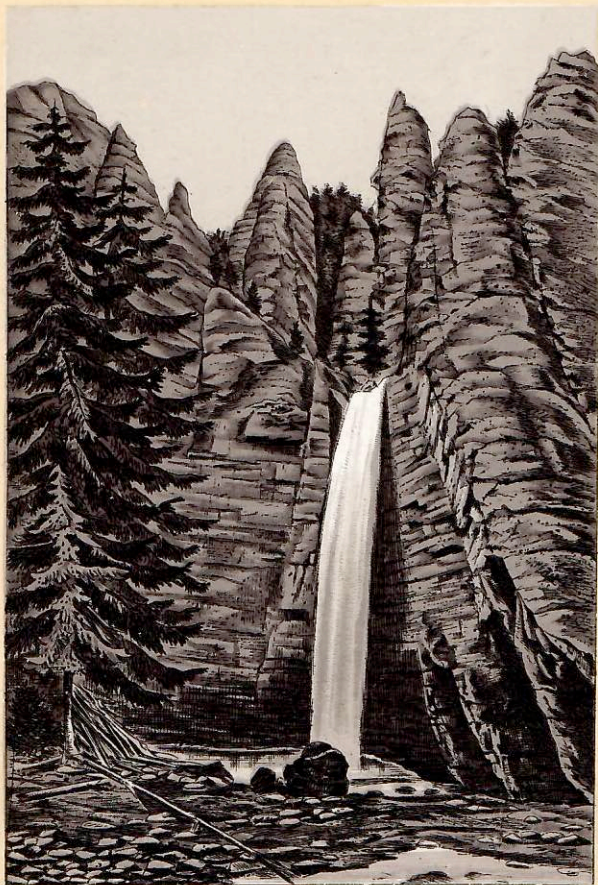
NATURAL BRIDGE - WEST SHORE YELLOWSTONE LAKE.



HAYDEN VALLEY YELLOWSTONE RIVER SOUTHWARD.



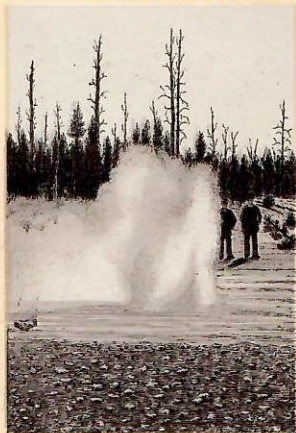
SHORES OF YELLOWSTONE LAKE.



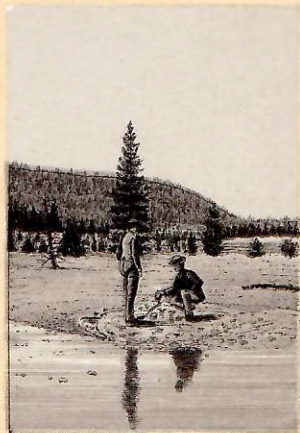
TOWER FALLS FROM BELOW 136 FEET HIGH.



Catching Fish in Yellowstone Lake & Cooking in Hot Spring.



MINUTE MAN GEYSER.



VIXEN GEYSER CRATER.

Copyrighted 1889 by W.C. Riker, Engraver, by Chas. Frey, Frankfurt, Germany,
Chicago, Ill., Pres. Parfitt and Co.,
from Photos. by Ingersoll and Haynes.
All rights reserved for Chas. Frey & Company, Souvenir Alliance.

